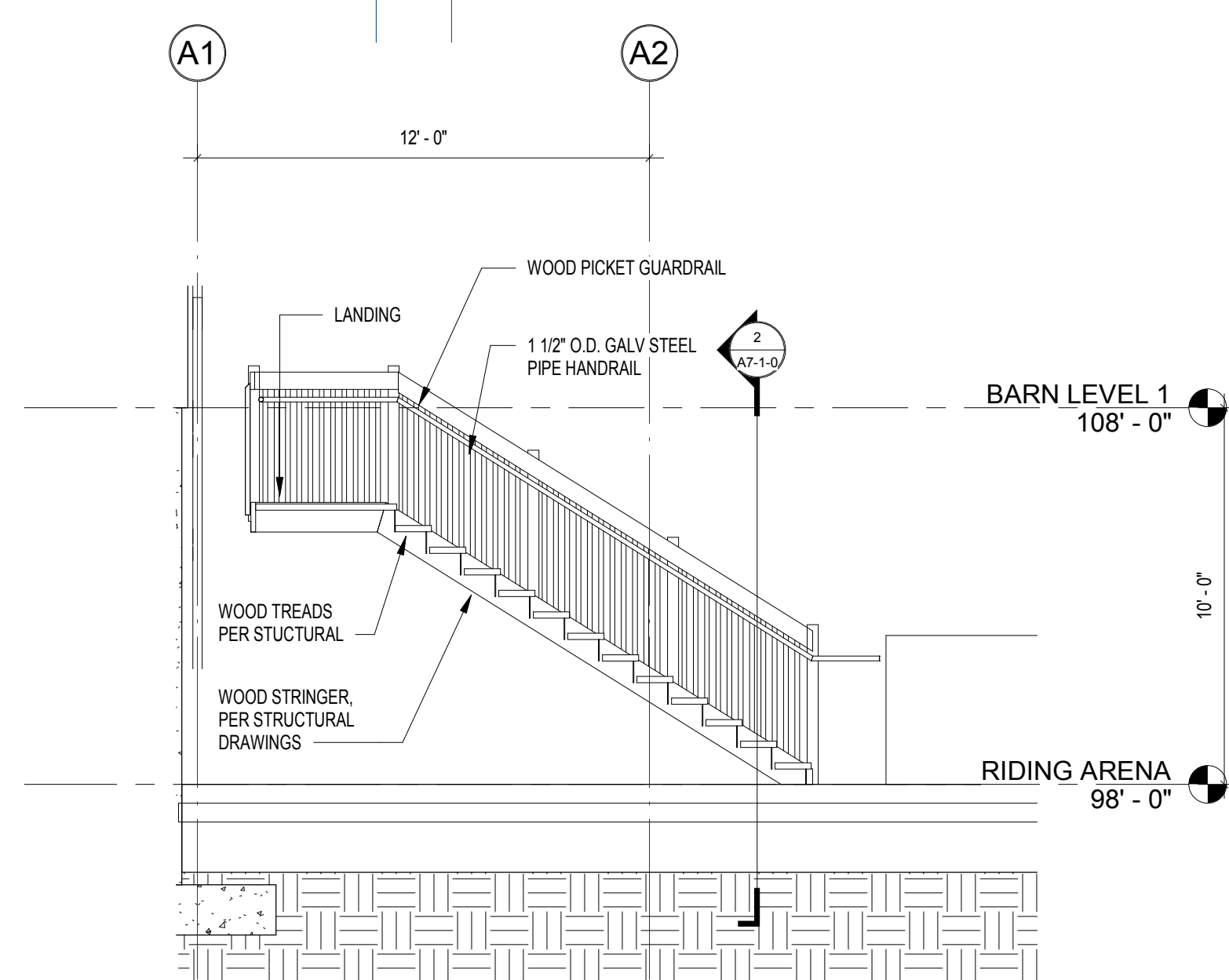
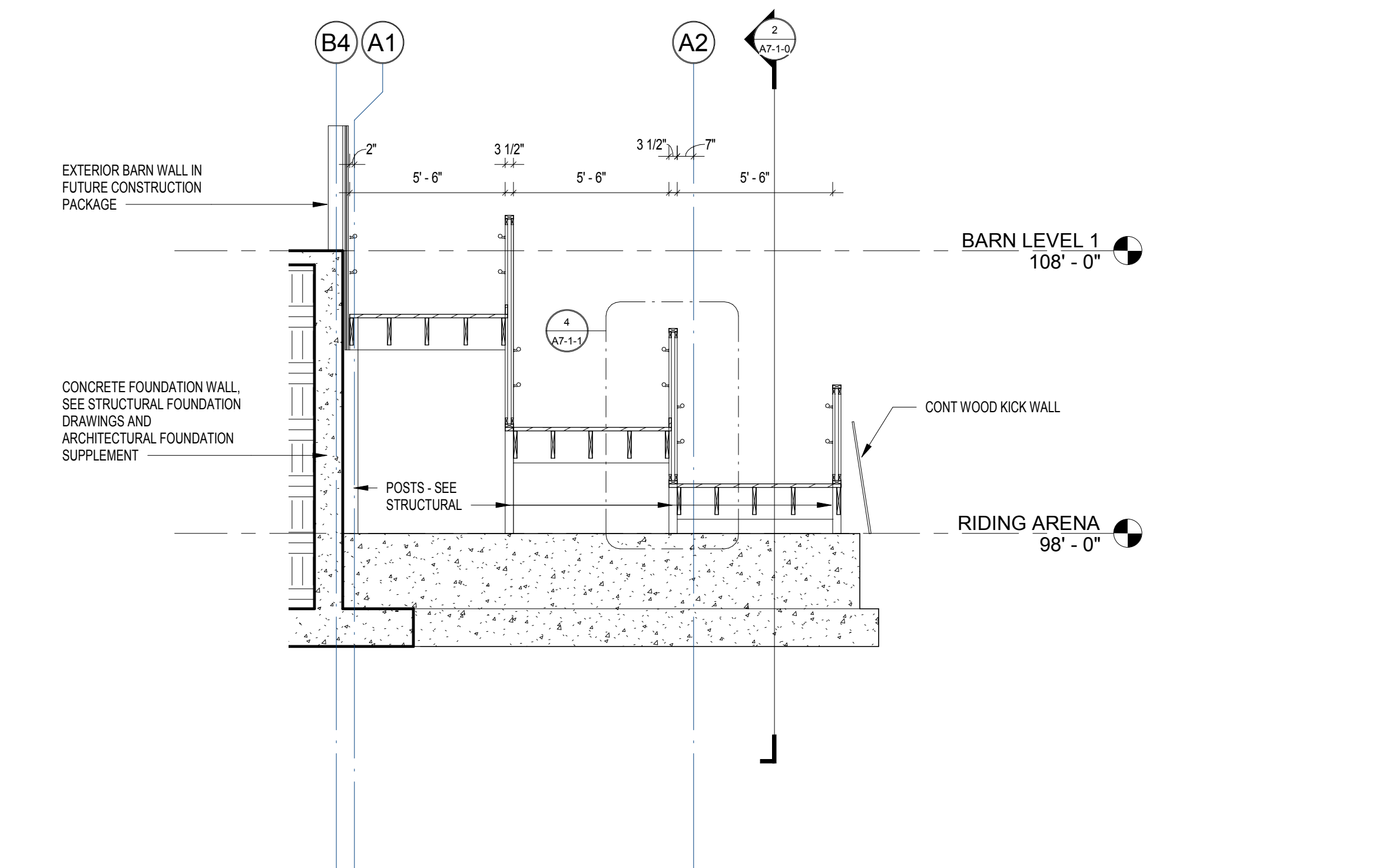


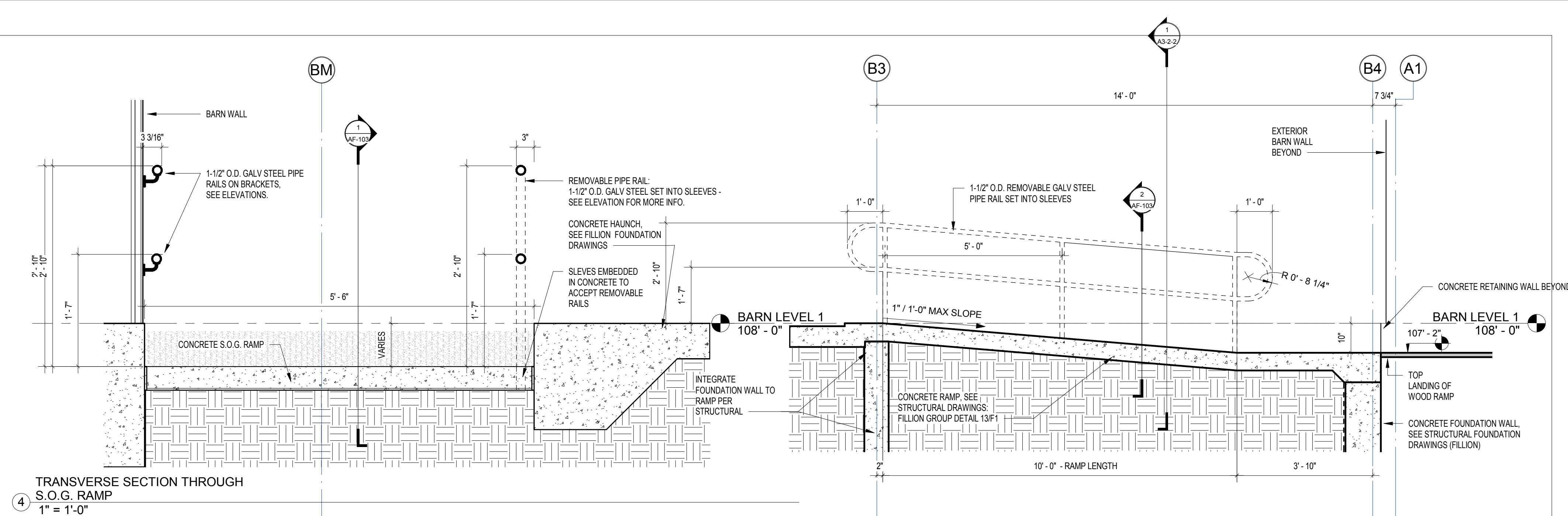
8 SECTION THROUGH STAIR
1/2" = 1'-0"



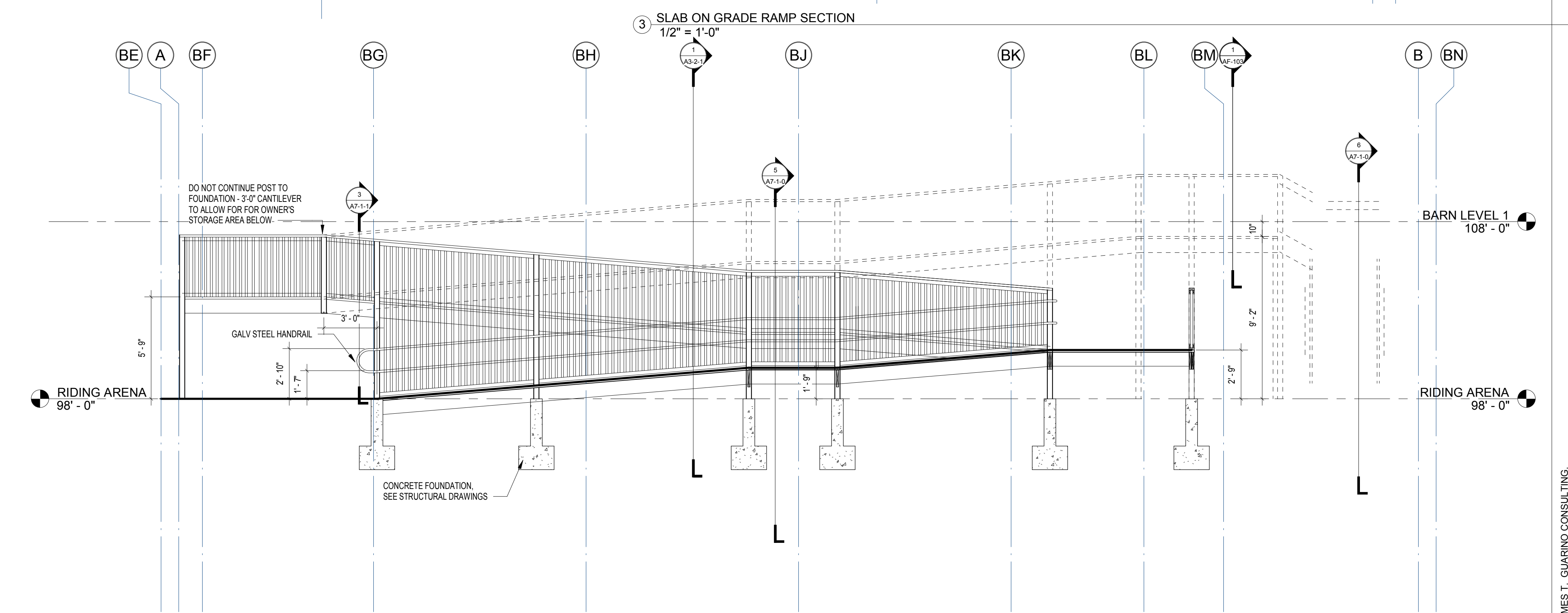
6 STAIR SECTION
1/4" = 1'-0"



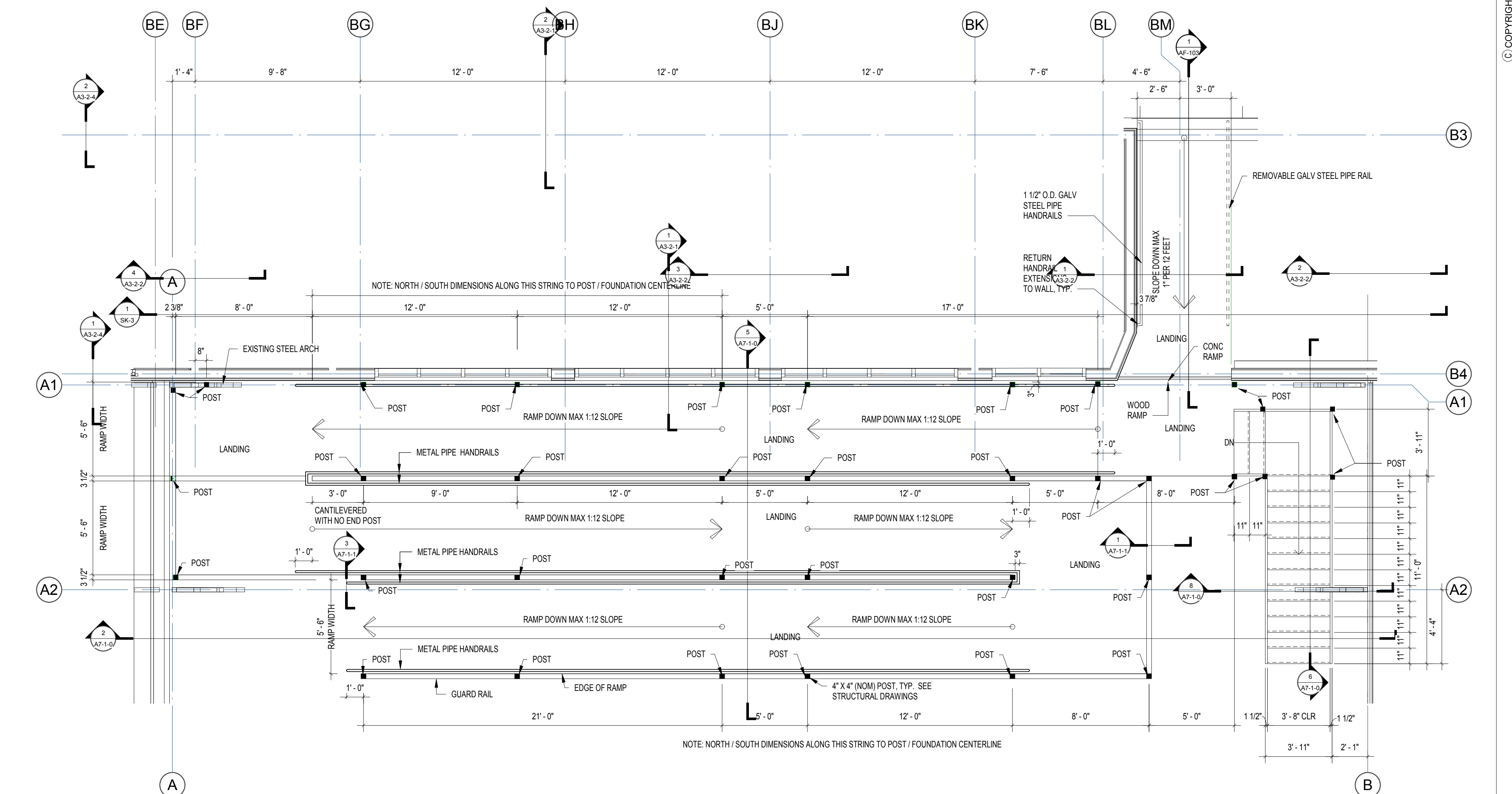
5 TRANSVERSE SECTION THROUGH RAMP
1/4" = 1'-0"



4 TRANSVERSE SECTION THROUGH S.O.G. RAMP
1" = 1'-0"



2 LONGITUDINAL SECTION AT RAMP
1/4" = 1'-0"



1 RAMP PLAN
1/4" = 1'-0"